

Agilent Technologies Optocouplers - continued

Optocoupler - Logic Gate Output - continued

10MBd and 40MBd Data-Rate - continued

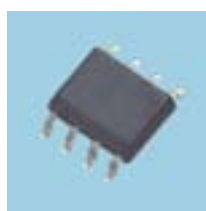
Mfrs. List No.	Order Code	1+	10+	100+	500+	+
Dual						
HCPL-263N-300E	SMD 913-0047	273.00	215.00	171.00	142.00	--
40MBd, HCMOS/LSSTL/STTL/TTL						
Dual						
HCPL-2430-000E	912-9847	521.00	410.00	323.00	272.00	--

Optocoupler - Analog

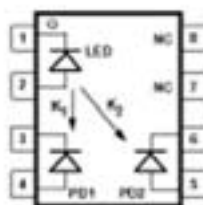
High Linearity and 20mA Current Loop



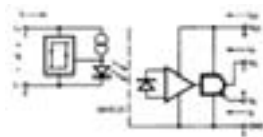
DIL - H = 5.1, W = 11.3, D = 9.0mm



SMD - H = 4, W = 11.5, D = 9mm



Analog Couplers



Current Loop Receiver

UL Recognised and CSA Approved

Operating Temperature Range	Transfer Gain - min (%)	Common Mode Rejection (KV/μs)	Bandwidth	Package Style	Mfrs. List No.
Single Channel - THT Analog Optocoupler					
-55 to 100°C	15%		1.5MHz	DIL	HCNR200-000E
-55 to 100°C	5%		1.5MHz	DIL	HCNR201-000E
Single Channel - Surface Mount Optocoupler					
-55 to 100°C	15%		1.5MHz	SMD	HCNR200-300E
-55 to 100°C	5%		1.5MHz	SMD	HCNR201-300E
Single Channel - 20mA Current Loop Receiver					
-40 to 85°C	1000V/μs	20KiloBaud @ 1400 meters line length		SMD	HCPL-4200-300E

382781

Mfrs. List No.	Order Code	1+	25+	100+	250+	+
HCNR200-000E	854-9702	168.00	153.00	128.00	125.00	--
HCNR200-300E	SMD 854-9710	170.00	156.00	130.00	126.00	--
HCNR201-000E	854-9729	222.00	202.00	170.00	166.00	--
HCNR201-300E	SMD 854-9737	224.00	203.00	172.00	167.00	--
HCPL-4200-300E	SMD 854-9958	328.00	299.00	253.00	245.00	--

Optically Isolated Amplifier

Short Circuit and Overload Protected



NEW



H = 3.5, W = 10.312, D = 7.493mm

This isolation amplifier is designed for current sensing in electronic motor drives. In a typical implementation, motor currents flow through an external resistor and the resulting analogue voltage drop is sensed by the device. A larger analogue output voltage is created on the other side of the HCPL-788J's optical barrier. The output voltage is proportional to the motor drive current and can be connected directly to a single supply A to D converter. Since the common mode voltage swings several hundred volts in tens of nanoseconds in modern electronic motor drives, the device was designed to ignore very high common mode transient slew rates.

- Output voltage directly compatible with A/D converters
- Fast short circuit detection (3 μs)
- Transient fault protection
- 1 μs / °C offset change against temperature
- 25 kV / μs isolation transient immunity
- Operating temperature -40°C to +85°C
- CSA, IEC/EN/DIN EN 60747-5-2 Approved, UL Recognised

414766

Mfrs. List No.	Order Code	1+	25+	100+	250+	+
HCPL-788J	SMD 912-9378	405.00	365.00	322.00	285.00	--
HCPL-788J-000E	SMD 999-4734	405.00	365.00	322.00	268.00	--

Surface Mount, SOIC-8

High Speed



Surface mount optocouplers in SOIC-8 package, compatible with standard surface mount processes. The electrical parameters are identical to the standard product. UL recognised.

Overall dimensions: H=5.8, W=5.08, D=3.2



Type	Standard DIP Equivalent	Mfrs. List No.
Single Channel		
Darlington output, low input current, high CTR	6N138	HCPL-0700-000E
Darlington output, low input current, high CTR	6N139	HCPL-0701-000E
Transistor	6N135	HCPL-0500-000E
Transistor	6N136	HCPL-0501-000E
Transistor, high CMR	HCPL-4504	HCPL-0454-000E
Transistor, high CMR	HCPL-4503	HCPL-0453-000E
Logic Gate, high CMR, logic gate	6N137	HCPL-0600-000E
Logic Gate, high CMR, logic gate	HCPL-2601	HCPL-0601-000E
Logic Gate, high CMR, logic gate	HCPL-2611	HCPL-0611-000E
Logic Gate CMOS	HCPL - 7710	HCPL-0710-000E
Logic Gate CMOS	HCPL - 7220	HCPL-0720-000E
Logic Gate CMOS	HCPL - 7220	HCPL-063A-000E
High speed CMOS	HCPL - 7721	HCPL-0721-000E
Logic Gate, high CMR, HCMOS compatible, logic gate	HCPL-261A	HCPL-061A-000E
Very High CMR, IPM and gate drive interface	HCPL-4506	HCPL-0466-000E
Logic Gate, logic gate	HCPL-2201	HCPL-0201-000E
Very High CMR, logic gate	HCPL-2211	HCPL-0211-000E
Dual Channel		
Darlington output, low input current, high CTR	HCPL-4731	HCPL-073A-000E
Transistor	HCPL-2530	HCPL-0530-000E
Transistor	HCPL-2531	HCPL-0531-000E
Transistor	HCPL-4534	HCPL-0534-000E
Logic Gate, high CMR, logic gate	HCPL-2630	HCPL-0630-000E
Logic Gate, high CMR, logic gate	HCPL-2631	HCPL-0631-000E
High speed, high CMR, logic gate	HCPL-4661	HCPL-0661-000E
Logic Gate, high CMR, HCMOS compatible, logic gate	HCPL-263A	HCPL-063A-000E
High speed, high CMR, HCMOS compatible, logic gate	HCPL-263N	HCPL-063N-000E
Transistor, high CMR, HCMOS compatible, logic gate	HCPL-263N	HCPL-0501-000E
Low input current, high Darlington	HCPL-2730	HCPL-0730-000E
Low input current, high Darlington	HCPL-2731	HCPL-0731-000E

206278

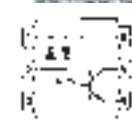
Mfrs. List No.	Order Code	1+	10+	100+	500+	+
HCPL-0700-000E	SMD 999-5196	107.00	82.00	66.00	56.00	--
HCPL-0701-000E	SMD 999-5200	114.00	88.00	71.00	56.00	--
HCPL-0500-000E	SMD 999-5226	97.00	74.00	60.00	47.00	--
HCPL-0454-000E	SMD 999-5285	176.00	134.00	109.00	86.00	--
HCPL-0453-000E	SMD 999-4670	121.00	96.00	78.00	61.00	--
HCPL-0600-000E	SMD 999-4696	128.00	98.00	79.00	62.00	--
HCPL0601	SMD 999-5102	135.00	103.00	84.00	66.00	--
HCPL-0611-000E	SMD 999-5382	150.00	118.00	94.00	79.00	--
HCPL-0710-000E	SMD 934-6880	432.00	379.00	344.00	309.00	--
HCPL-0720-000E	SMD 934-6899	496.00	436.00	395.00	355.00	--
HCPL-063A-000E	SMD 999-5412	307.00	241.00	192.00	160.00	--
HCPL-0721-000E	SMD 912-9804	297.00	234.00	198.00	174.00	--
HCPL-061A-000E	SMD 999-5390	136.00	107.00	86.00	71.00	--
HCPL-0466-000E	SMD 913-0012	155.00	122.00	103.00	91.00	--
HCPL-0201-000E	SMD 999-5404	187.00	147.00	117.00	98.00	--
HCPL-0211-000E	SMD 912-9995	174.00	137.00	109.00	91.00	--
Dual Channel						
HCPL-073A-000E	SMD 913-0004	270.00	212.00	169.00	141.00	--
HCPL-0530-000E	SMD 999-5161	233.00	184.00	146.00	122.00	--
HCPL-0531-000E	SMD 999-5170	244.00	192.00	153.00	127.00	--
HCPL-0534-000E	SMD 999-5188	327.00	257.00	205.00	170.00	--
HCPL-0630-000E	SMD 999-5099	246.00	198.00	158.00	140.00	--
HCPL-0631-000E	SMD 999-5110	296.00	233.00	186.00	155.00	--
HCPL-0661-000E	SMD 913-0055	217.00	171.00	136.00	113.00	--
HCPL-063A-000E	SMD 999-5412	307.00	241.00	192.00	160.00	--
HCPL-0501-000E	SMD 999-4688	114.00	88.00	71.00	59.00	--
HCPL-0730-000E	SMD 999-5277	244.00	192.00	153.00	127.00	--
HCPL-0731-000E	SMD 999-5129	272.00	214.00	170.00	142.00	--

Optocouplers

Transistor Output



Transistor



ac Input

All parts are UL recognised. Items ending in either 'V-M' or '.300' are also VDE approved.